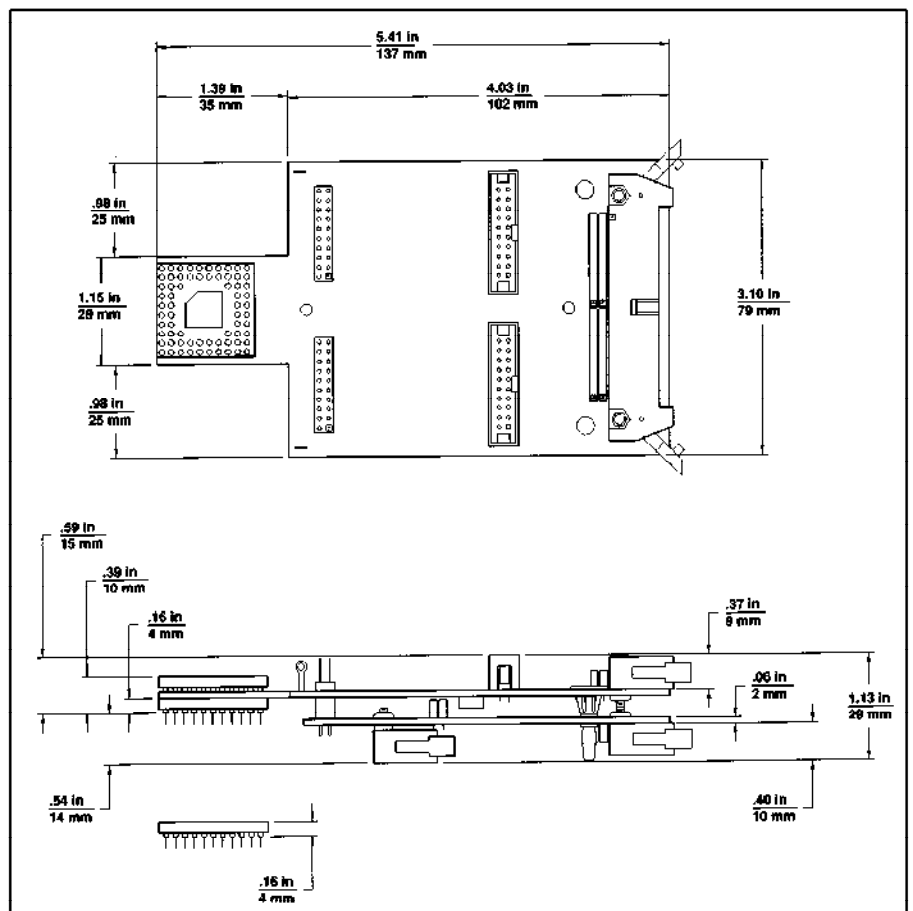


# HP E2447AA and HP E2447AB

## Motorola 68000 and 68EC000 Preprocessor Interfaces

For use with  
HP logic analyzers

The HP E2447AA and HP E2447AB preprocessor interfaces provide an easy way to connect a Hewlett-Packard logic analyzer to a target system using the Motorola 68000 or 68EC000 microprocessors. All necessary clocks are passed through by the preprocessor to the logic analyzer, ensuring that data is captured at the correct time. Software is shipped with the product that automatically configures the logic analyzer, generating labels for address, data, and status signals. Included with the software is a disassembler that displays execution traces in 68000 microprocessor mnemonics. Instructions that are pre-fetched, but not executed are marked in the trace display.



Hewlett-Packard is a Platinum member of the Motorola 68K Developer Program

## Key Specifications

### Timing Analysis support:

Each preprocessor provides unbuffered timing analysis for all signals.

### Parametric Measurements:

When using PLCC versions of the chip, the preprocessor provides probing points to take parametric measurements.

### Pods Required:

Each preprocessor has three connectors available for state analysis and four for timing analysis. For disassembly, three logic analyzer pods must be used. All signals used in disassembly can be double probed for state and timing analysis. Four pods allow timing measurements of all processor signals.

### Termination Adapters (TAs):

None are required for state analysis as the connectors are terminated on the preprocessor. For timing analysis one TA (part number 01650-63203) is required per pod.

### Logic Analyzers Supported:

1650B, 1652B, 1654B, 1660A, 1661A, 1662A, 16510B, 16511B, 16540 and 16541 (A and D models), 16542A, 16550A

### HP E2447AA for Motorola 68000 Microprocessors - Processors Supported:

68000, 68010, 68HC000 68-pin PGA through 16.7 MHz.

Adapters for the 64-pin DIP and 69-pin PLCC versions of the 68000 are available from Emulation Technology, (408) 982-0660.

### HP E2447AB for Motorola 68EC000 Microprocessors - Processors Supported:

68EC000 69-pin PLCC through 16.7 MHz.

### Adapters Available:

A PLCC adapter is included with the product. To order extras use the following part numbers:

|                                 |           |
|---------------------------------|-----------|
| PLCC/PGA IC Chip Carrier Socket | 1200-1751 |
| PGA/PLCC Adapter                | 1200-1752 |

### Signal Line Loading:

100-kOhms plus 18-pF capacitance on all lines except 50-kOhms plus 30-pF on USD

### Operations Displayed:

User Data Read/Write, User Program Read, Supervisor Read/Write, Supervisor Program Read, Interrupt Acknowledge.

**For more information**, call your local HP sales office listed in your telephone directory, or an HP regional office listed below:

#### United States:

Hewlett-Packard Company  
2101 Gaither Road  
Rockville, MD 20850  
(301) 258-2000

Hewlett-Packard Company  
5201 Tollview Drive  
Rolling Meadows, IL 60008  
(708) 255-9800

Hewlett-Packard Company  
1421 S. Manhattan Ave  
Fullerton, CA 92631  
(714) 999-6700

Hewlett-Packard Company  
2000 South Park Place  
Atlanta, GA 30339  
(404) 955-1500

#### Canada:

Hewlett-Packard Canada Ltd.  
5150 Spectrum Way  
Mississauga, Ontario  
L4W 5G1  
(416) 206-4725

#### Europe:

Hewlett-Packard  
European Marketing Centre  
P.O. Box 999  
1180 AZ Amstelveen  
The Netherlands

#### Japan:

Yokogawa-Hewlett-Packard Ltd.  
Measurement Assistance Center  
9-1, Takakura-Cho, Hachioji-Shi,  
Tokyo 192, Japan  
(81) 426 48 0722

#### Latin America:

Hewlett-Packard  
Latin American Region Headquarters  
5200 Blue Lagoon Drive  
9th Floor  
Miami, Florida 33126  
U.S.A.  
(305) 267 4245/4220

#### Australia/New Zealand:

Hewlett-Packard Australia Ltd.  
31-41 Joseph Street  
Blackburn, Victoria 3130  
Australia  
Melbourne Caller 272 2555  
(008) 13 1347

#### Far East:

Hewlett-Packard Pacific Ltd.  
22-30/F Peregrine Tower  
Lippo Centre  
89 Queensway, Central  
Hong Kong  
(852) 848 7070

**Technical information in this document is subject to change without notice.**

**Printed in U.S.A. 1/94  
5962-7974 E**